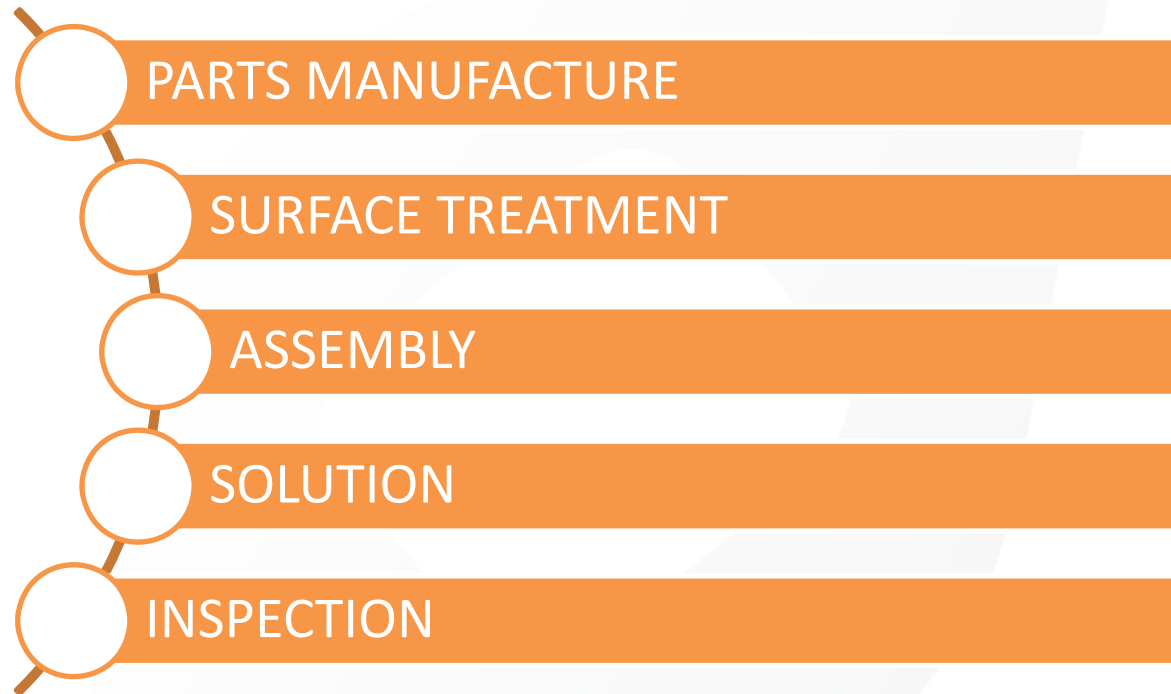




**DFK**  
INDUSTRIAL CORP.

# What We Do





Found in 1988 Cable  
connector factory Pro-Data

1988



2002



2006



2011



Invest mold/ injection China  
factory

Milling & Turned

DFK Industrial Corp.



# About DFK Industrial Corp.



Founded in 2011, **DFK Industrial Corp** has been dedicated to become High precision structural / Mechanical parts supplier to our world wide customer. We provide “Parts Manufacture,” “Assembly,” “Integrated Solution” and “Inspection” service with highest standard.

We are experienced in processing on different materials from Brass, Aluminum, Stainless Steel, Titanium to Plastics and are able to perform various Surface treatments to satisfy our customer's requirement. Our production range is from Ø1mm to Ø65mm on Turning parts; for Milling part the maximum is 1.5 m. For 30 years, we've been supplied customized Fastener, Hydraulic / Pneumatic Parts, Bearing & Shaft, and more to various industries.



# Headquarter





# Inspection Equipment



Video Optical  
Comparators



3D CMM



TESA Digital  
Height Gauge



Micro Vu Video  
Optical Comparators



Surface Roughness Tester

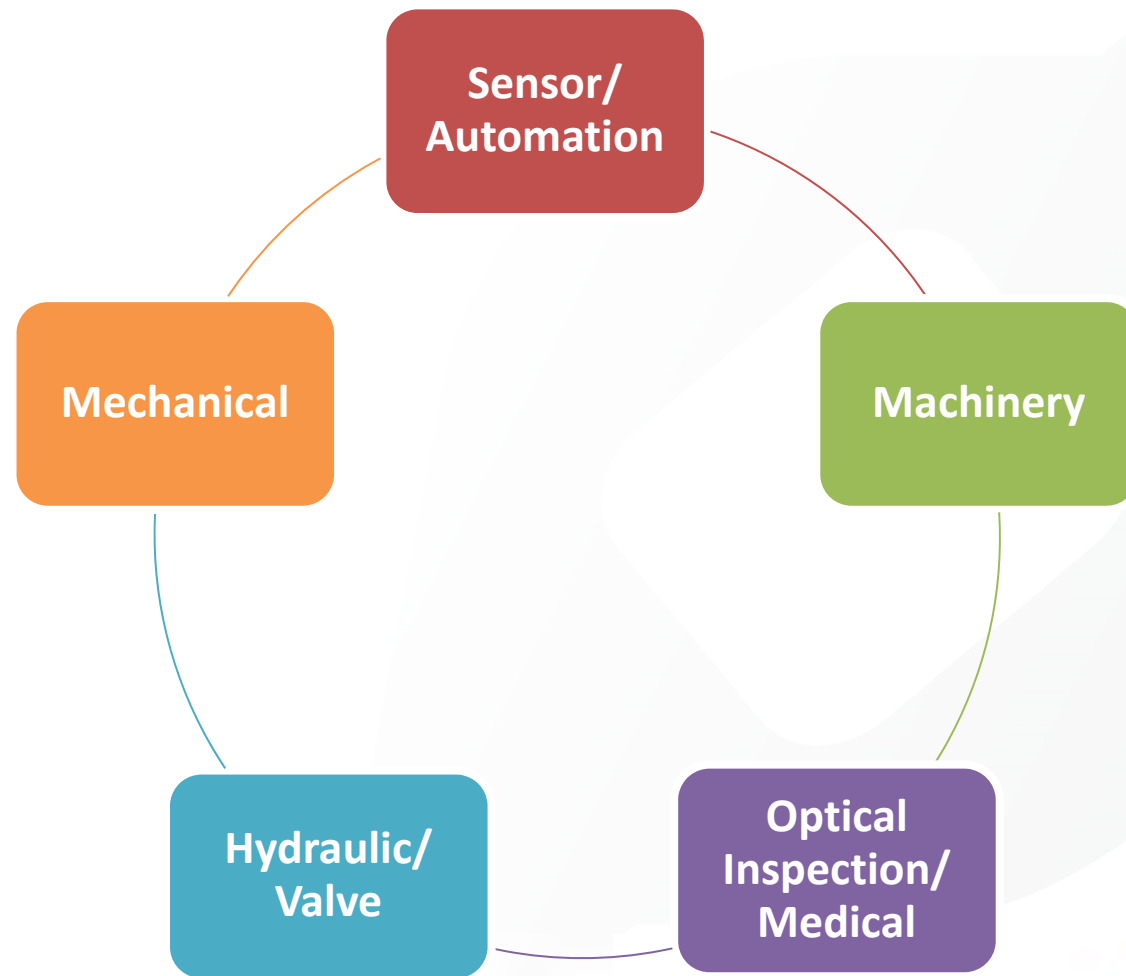
# Inspection Equipment

Roundness/Cylindricity Measurement  
- Mitutoyo Roundtest RA-2200 -



Contour Measuring Systems  
- Mitutoyo Contracer CV-3200 -

# Applied Industries





# Fastener

# Bolt

## Stainless Steel



M3X16 HEX Bolt (Nickel Plated)



44mm, M3, M4 Double Threaded Bolt



M6 Excenter Bolt



M8 Bolt



M6 Bolt

# Bolt

## Stainless Steel



M3 Hex Bolt



M4 HEX Bolt



M4 Round Head Bolt



M10 Bolt

# Bolt

## Stainless Steel

26.5mm, M3 Bolt



40mm, M4 Bolt



M4 Bolt



M3 Flat Bolt



M5 Flat Set Bolt



# Screw

## Aluminum



Corrective Screw (Black Anodized)



Worm Screw



# Screw

## Copper



Adjustment Set Screw



Bearing Screw



Bottom Insert Screw



Eccentric Set Screw

# Screw

## Stainless Steel

Knurled Positioning Screw



M2.5 X 0.45 Screw



M3 X 0.5 Screw



SHCS #4-40 X .375 Screw



# Screw

## Height Adjusting Screw



Height Adjusting Screw



Screw Holder



Height Adjusting Stud

# Threaded Stud

Copper



Axle Lock Stud



M4 Threaded Stud



M3 Threaded Rod



Decentering Stud



M3 Threaded Stud



M8 Threaded Stud

# Nut

Carbon Steel



SW15, M6 Hex Nut



M4, Hex Guide Nut



Ø61mm M50, M3 Nut



# Nut

Stainless Steel



Clip Nut



Hex Union Nut



M10 Knurled Nut

# Clamp

## Aluminum



Aluminium Clamp



Side Clamp



Roll Support Clamp



Axel Tube Clamp (Black Anodized)



Clamp

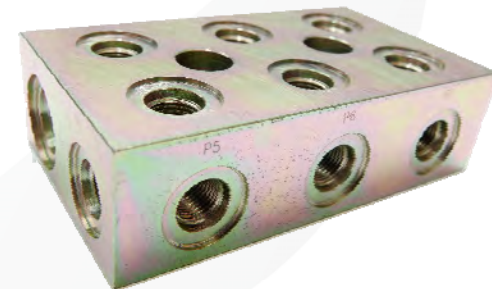
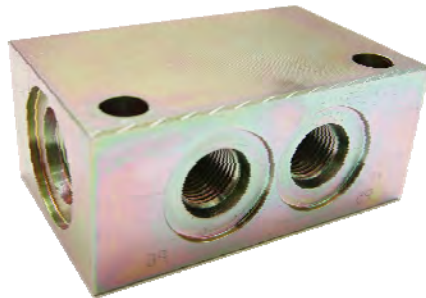
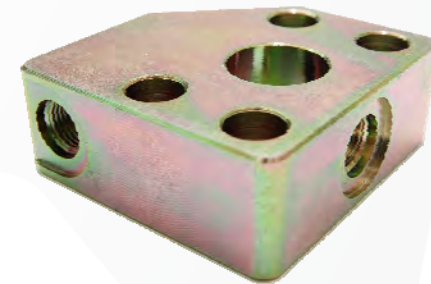


Axel Tube Clamp

# Manifold Block

# Manifold Block

Aluminum, Stainless Steel,  
Carbon Steel



Manifold Block

# Manifold Block

Copper



Manifold Block



# Manifold Block

Aluminum, Stainless Steel,  
Carbon Steel



Manifold Block

# Pipe / Tube Fittings

# Customized Fittings

Stainless Steel



Barbed Fitting



Horn Connector

# Customized Fittings

## Aluminum



Barbed Adapter



Swivel Connector



Swivel Elbow



Gauge Coupler

# Customized Fittings

Stainless Steel



10 LPM Flow Restrictor



Economizer Inlet Fitting



Vacuum Pump Air Inlet



Vacuum Pump Air Outlet



# Customized Nipples

Stainless Steel



Ø1.2MM ID Nipple



Ø1.2MM Water Trap Nipple



Ø1MM ID - Ø1.8MM OD Nipple



Ø1MM ID Nipple



Ø1MM ID Press Fit Nipple



Ø2MM ID Nipple

# Customized Nipples

## Stainless Steel



303 Stainless Ø1.0mm Gas Port



316 Stainless Ø1.0mm Gas Port



Ø6F8 - Ø5.5mm Reducing Nipple



Tube Disposable Nipple

# Customized Nipples

Copper



Ø0.25mm Pore Barbed Nipple



Ø1.2mm ID Barbed Nipple



Ø1.2mm ID Nipple



Ø2.5mm ID Barbed Fluid Nipple



Ø2.5mm ID Fluid Nipple



Pressure Port Nipple

# Standard Thread Fittings

## Quick Coupling



# Standard Thread Fittings

## Bite Type



Female Branch Tee



Male Branch Tee



Male Run Tee



Union Tee



Reducing Union Tee



Union Tee

# Standard Thread Fittings

## Bite Type



Female Elbow



Male Elbow



Reducing Elbow



Union Elbow



Compression Male Elbow

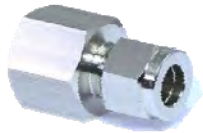


Compression Union Elbow



# Standard Thread Fittings

## Bite Type



Female Connector



Male Connector



Reducing Union Tee



Union connector



Bulkhead Female Connector



Bulkhead Male Connector



Bulkhead Union



Compression Male Connector

# Standard Thread Fittings

## Bite Type



Ferrule



Insert



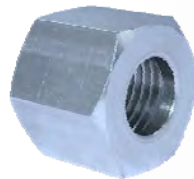
Plug



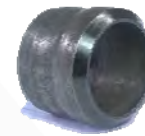
SKA Compression Fittings



Cap



Compression Nut



Compression Ring



Fitting Nut

# Bearing & Shaft

# Axel

## Carbon Steel



Bearing Drive Axle



M8 Threaded Axle



Bearing Axle



Brake Axle



Axle (Nitride Case Harden)



Pivot Axle

# Shaft

## Aluminum



Pivot Shaft

# Shaft

## Carbon Steel



Belt Wheel Rotary Shaft



Jackshaft 7.7mm



Jackshaft 10.3mm



Spring Shaft (Case Harden)



Hex Tip Shaft





# Shaft

## Copper



Drive Shaft



Tension Spring Shaft

# Shaft

Stainless Steel



Bearing Mounting Shaft



Central Shaft



Pivot Shaft

# Shaft

## Stainless Steel



Gear Shaft (Case Harden)



Ø8mm X 125mm, M6 Threaded Shaft



Prism Shaft



Pulley Shaft

# Spindle

Copper



Spindle

# Spindle

## Ø4mm Spindle Assembly



Ø4mm Spindle & Carrier Assembly



Ø4mm Spindle



Spindle Carrier

# Spindle

Ø6mm Spindle,  
Accessory



Ø6mm Spindle Carrier



Ø6mm Spindle Lock



Ø6mm Spindle



# Spindle

Stainless Steel



Indexing Spindle



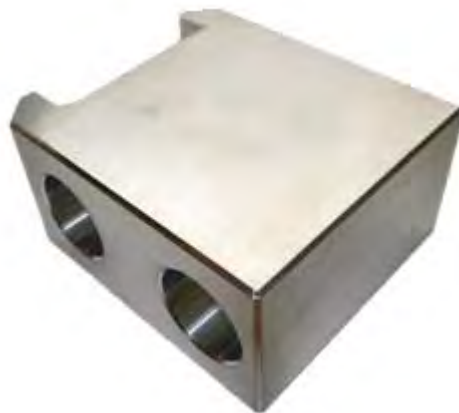
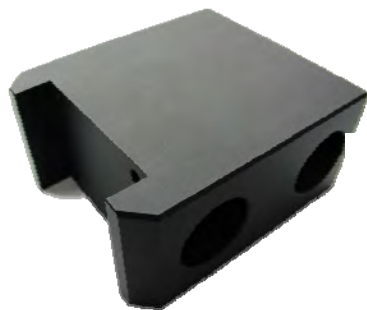
Pivot Spindle



Wheel Spindle

# Bearing Housing

Aluminum



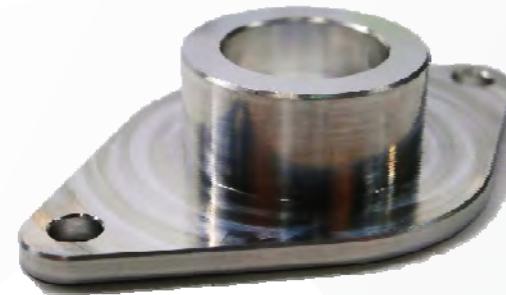
Ball Bearing Block

# Bearing Housing

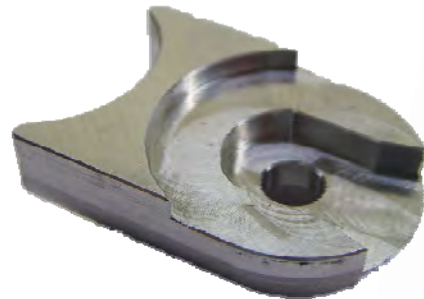
## Aluminum



Bearing Housing



Bearing House



Bearing Seat



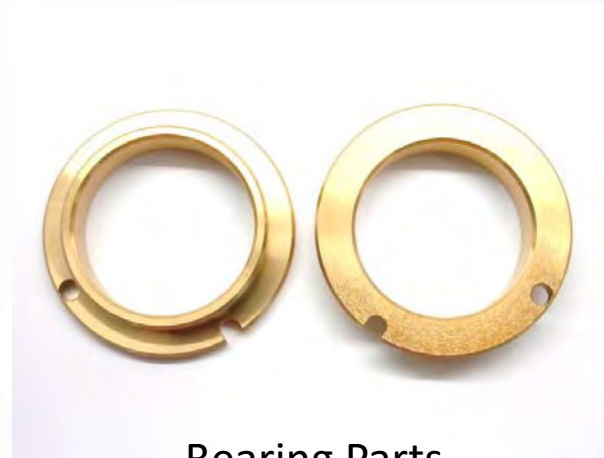
Long Bearing House

# Bearing Application

Copper



Bearing Cage



Bearing Parts

# Bearing Collar

Stainless Steel



Bearing Collar

# Bearing Housing

Plastic



POM Ø12mm Bearing Seat



PTFE Bearing Holder

# PTFE Bearing



PTFE Top Bearing



PTFE Bearing with Rod Bore

## PTFE



PTFE Bearing



PTFE Bearing Ø47mm



# Bushing

Aluminum



Guide Bush (Black Anodized)

# Bushing

Carbon Steel



Ø12P7 - Ø8H7 Bushing

# Bushing

## Copper



M8 X1.25 Threaded Bush (Nickel Plated)



Ø8mm - Ø10mm, 9mm Guide Bushing



Ø5.75mm - Ø3mm Bush



Ø6mm - Ø4.2mm Pivot Bushing



Ø6mm - Ø4mm Pivot Bushing

# Bushing

Stainless Steel



Ø4.96mm Bushing



Ø4g7 Bushing

# Bushing

## Plastic



M6  
Threaded  
Guide Bush



Ø4.9mm - Ø4.3mm PEG Bush



Ø9.95mm - Ø8mm  
Nylon Bushing

# Structural / Mechanical Parts



# Plate

## Aluminum



Cover Plate (CHROMITAL TCP)



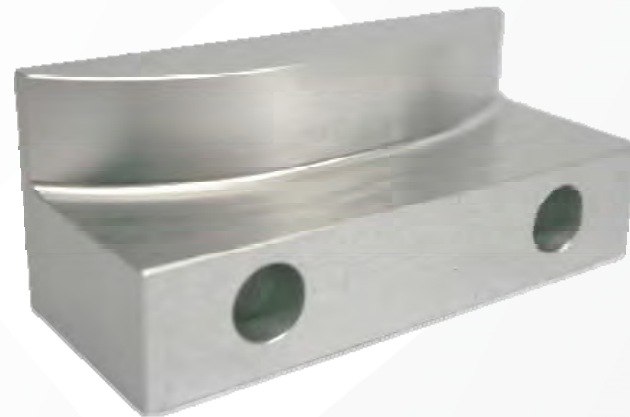
Mounting Plate (Clear Anodized)

# Plate

## Aluminum



Bar Ledge



Fixation Guide

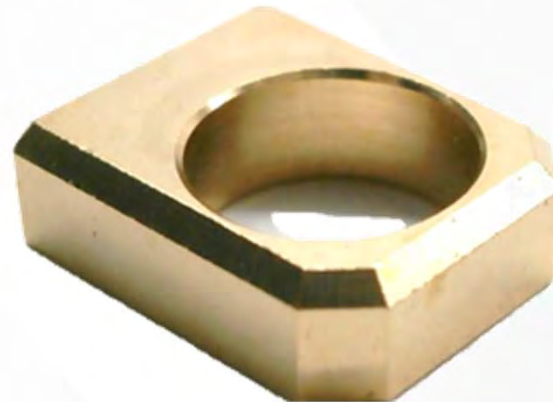


# Plate

## Copper



Index Plate With Ø6H10 Hole



Index Plate With Ø10H10 Hole

# Plate

Aluminum & Stainless



Controller Plate



Locking System Mounting Plate

# Angled Plate

## Aluminum



End Plate



Support Plate



Mounting Bracket (Black Anodized)



Support Plate (Black Anodized)

# Angled Plate

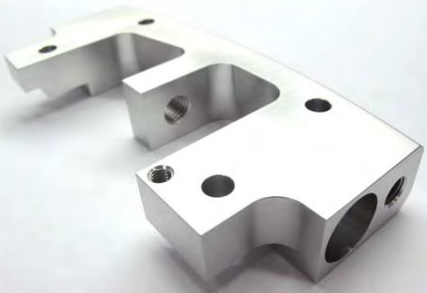
Aluminum



Connecting Angled Plate



Connecting Plate



Head Plate



Under Guide Plate

**Block**

**Stainless Steel**



Spacer Block

# Cover Plate

Aluminum & Stainless



Cover Plate (Sand Blast, Silver Anodized)



Cover Plate

# Finger Parts

Aluminum & Stainless



36mm Catch Hook



Finger Bracket (Silver Anodized)

# Holder

Aluminum



Catch Hook Holder



Chassis (Black Anodized)



# Housing

Aluminum



Ø21 X 37mm Housing With M3 Hole (Anodized)

# Housing

## Aluminum



Spring-Loaded Center

# Housing

Aluminum & Stainless



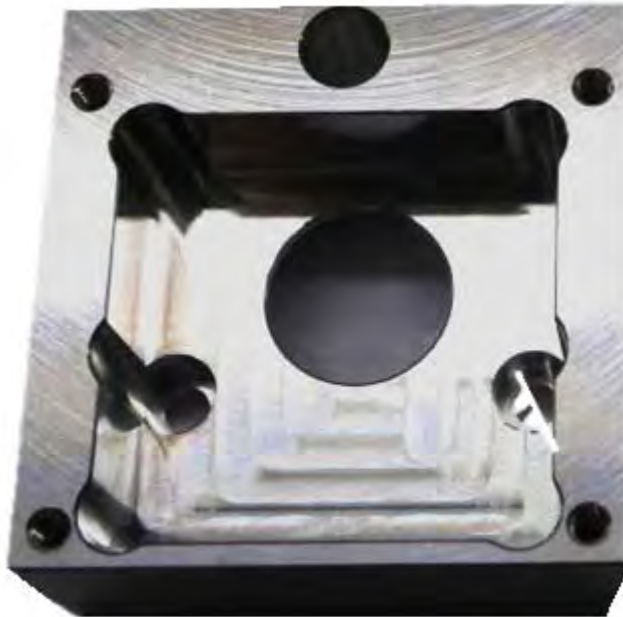
Guide Rod Mount (Black Anodized)



Lift Mount

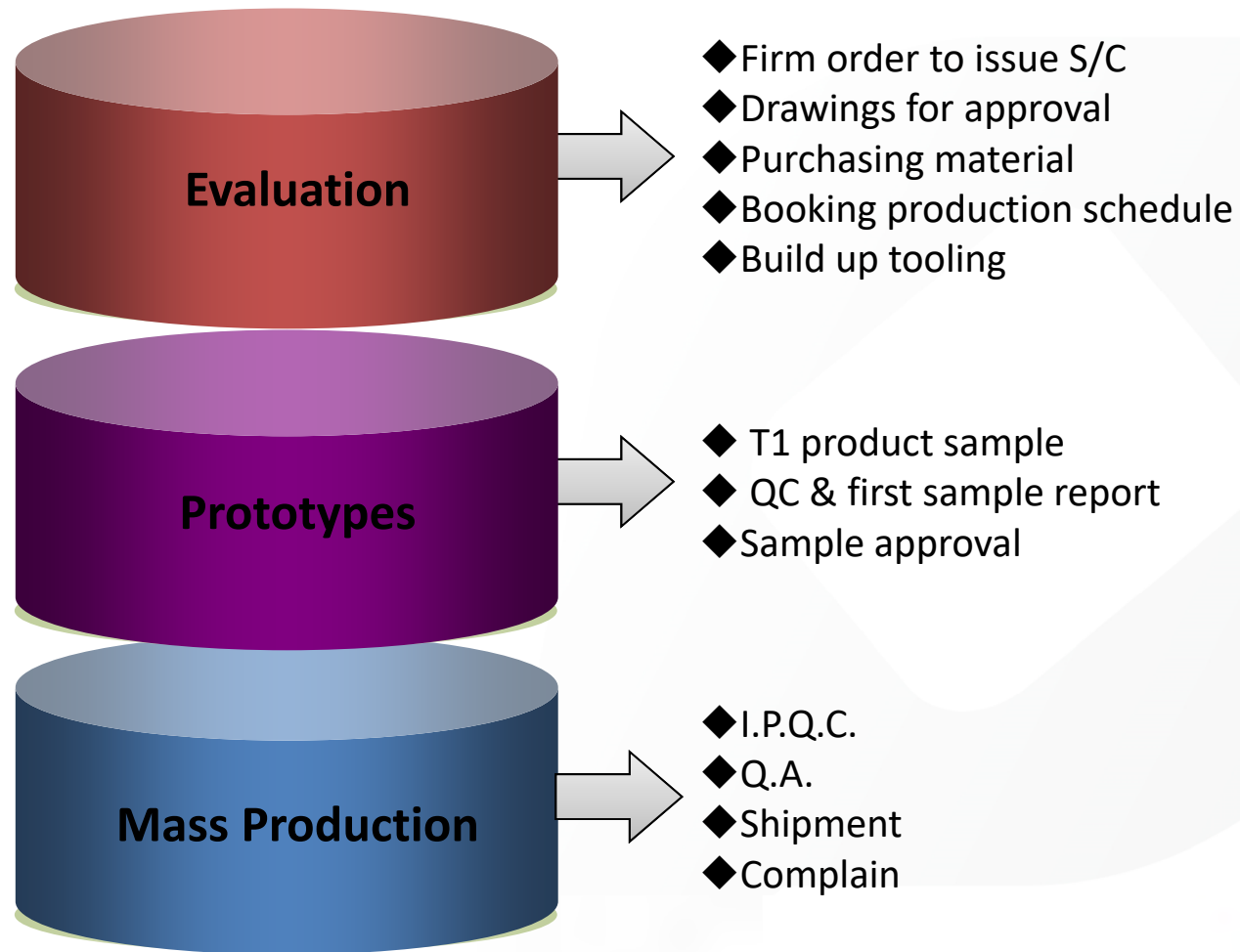
# Housing

Stainless Steel

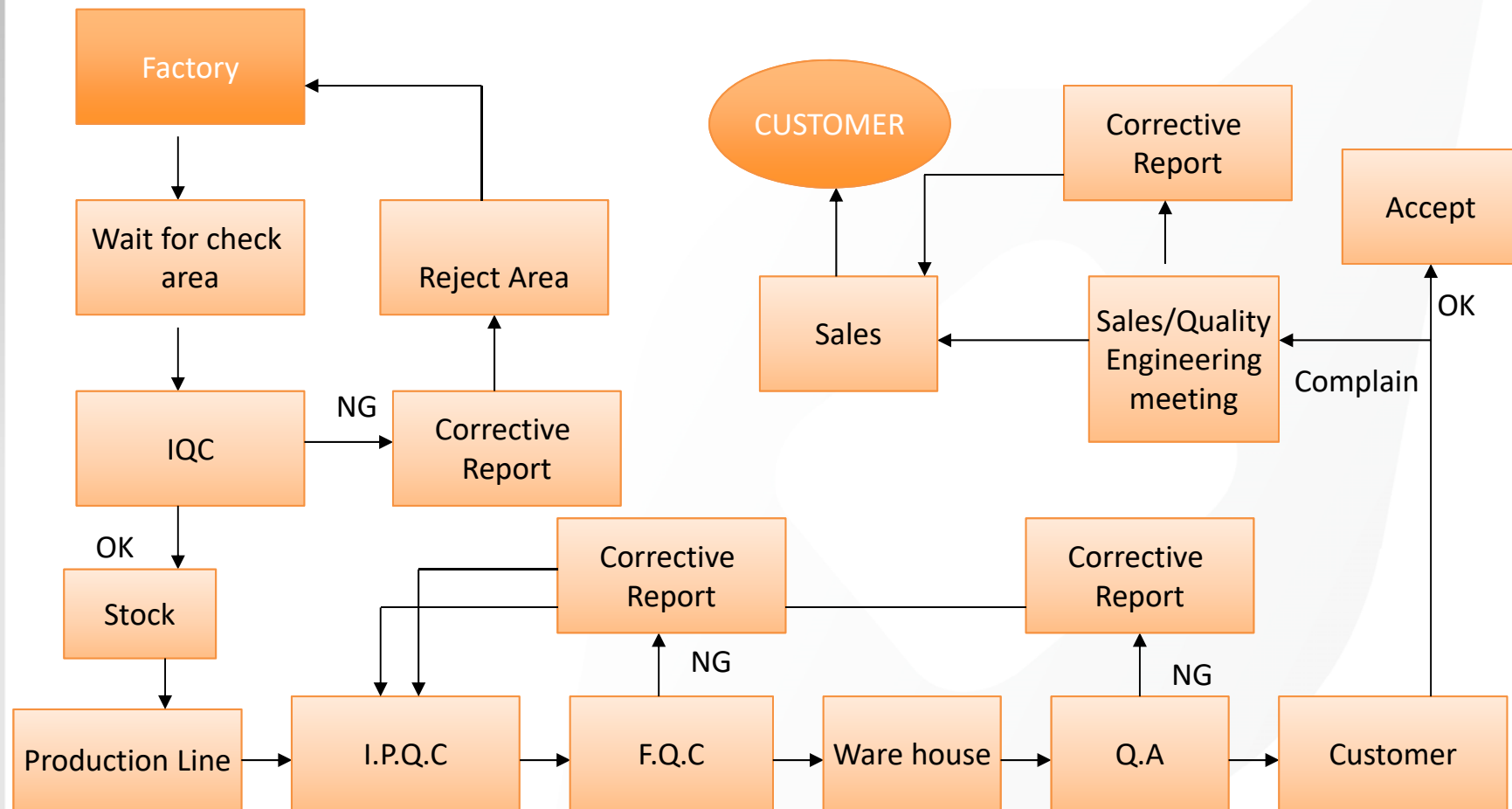


Square Housing (CHROMITAL TCP)

# Ordering Process



# Q.C System





# Quality Assurance

## ISO 9001 Certificated

DFK is dedicated to achieving customer satisfaction.

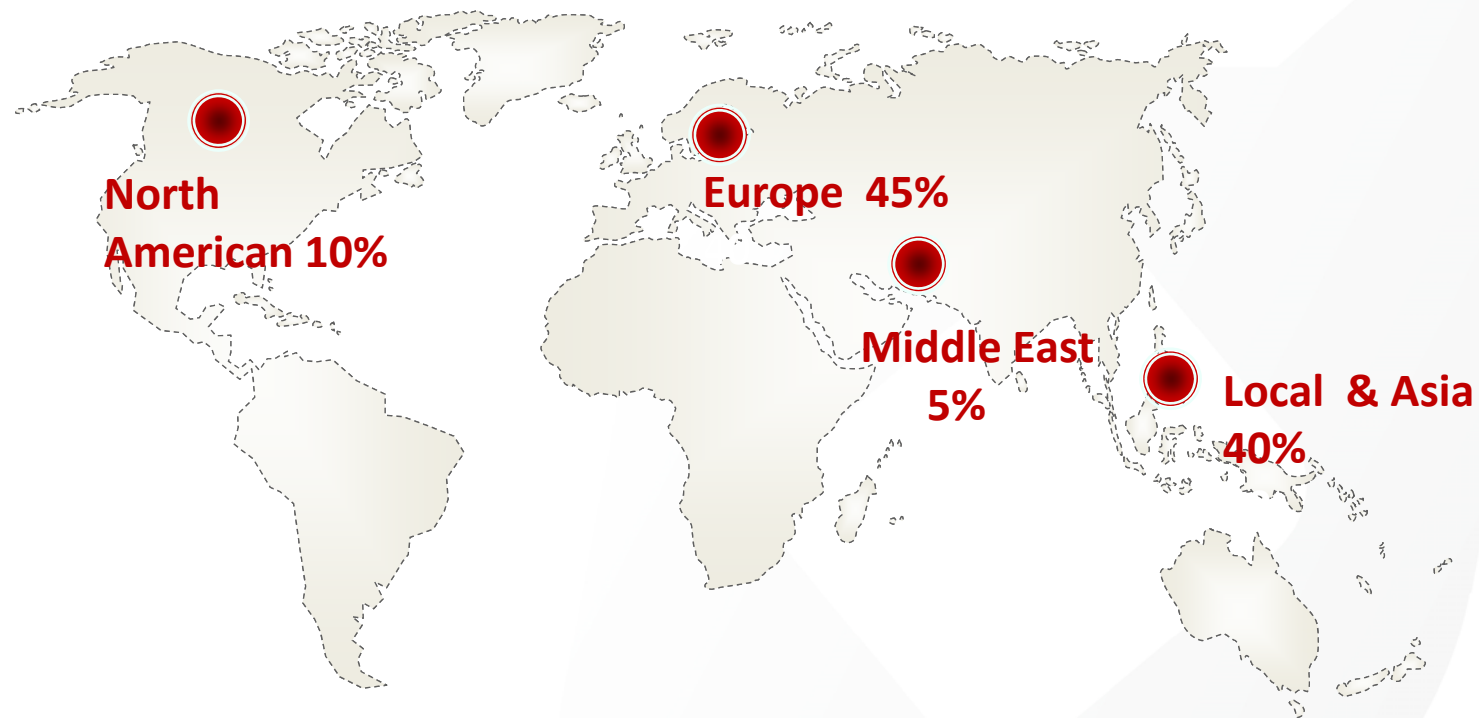
ISO standards make a positive difference, not just to engineers and manufacturers for whom they solve basic problems in production and distribution, but to society as a whole.

## ROHS & REACH COMMITTED

*Our products including materials and packing all meet RoHS 2011/65/EU & REACH SVHC 169*



# Market Distribution



## Contact US

**DFK Industrial Corp.**

1F., No. 33, Lane 3, Sec. 1, Zhong Zheng East Road.,  
Tamsui Dist., New Taipei City 25147, Taiwan

T 886-2-2625-1940

F 886-2-2623-9540

[dfk@dfk-cnc.com.tw](mailto:dfk@dfk-cnc.com.tw)

